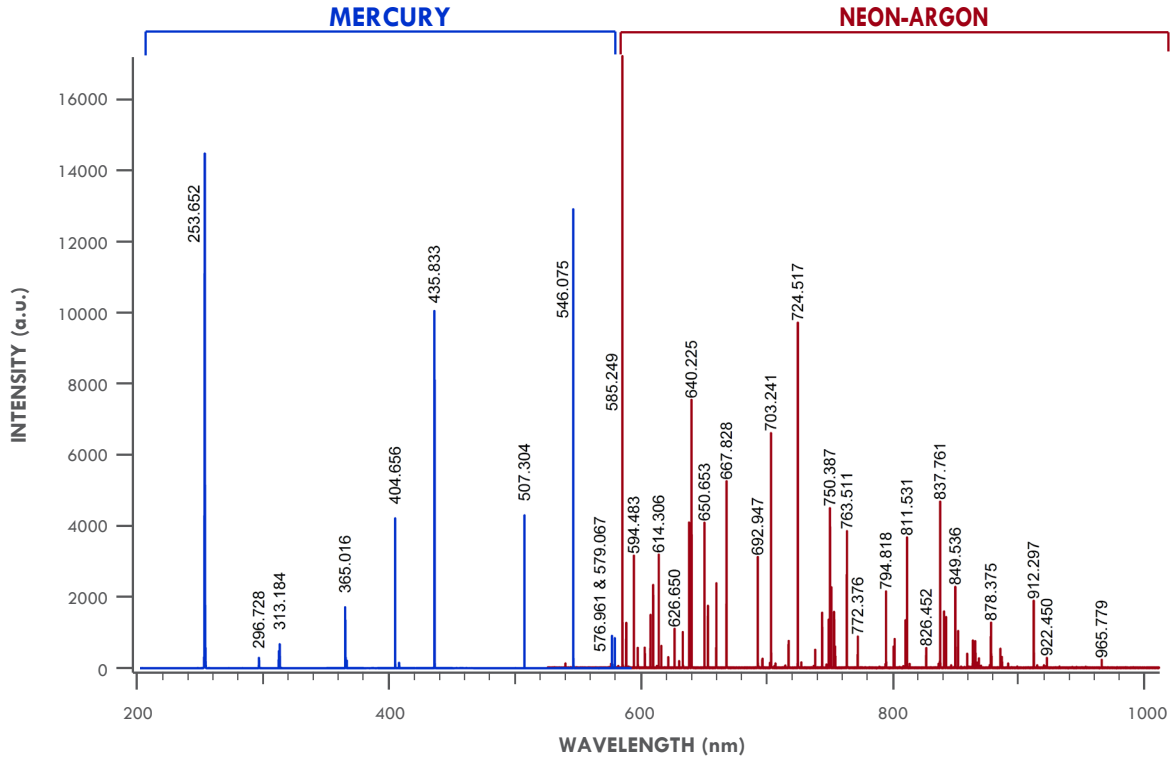


# WAVELENGTH CALIBRATION SPECTRUM

\* INDICATES STRONG LINE WITHIN WAVELENGTH GROUP \*\* INDICATES STRONGEST LINE FOR THE ELEMENT ( ) INDICATES 2ND OR 3RD ORDER

Princeton Instruments

USB Hg and Ne-Ar Source



MERCURY

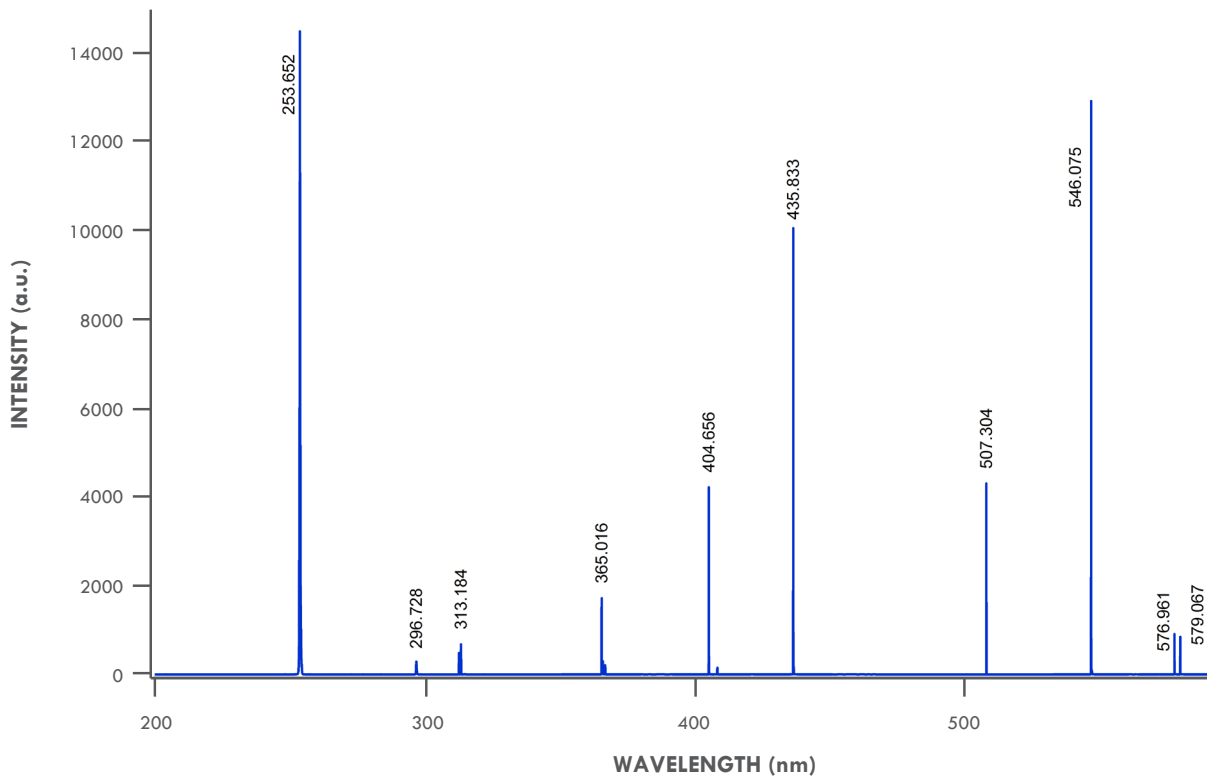
ARGON

NEON

	100	200	300	400	500	600	700	800	900	
MERCURY	184.950 194.227	226.223 237.832 248.200 253.652** 265.204 280.346 289.360 296.728	302.15 312.567 313.155 313.184 334.148 365.016* 365.484 366.328	404.656* 407.784 435.833*	507.304* 576.961 579.067	625.14 (2x312.57) 626.37 (2x313.184)	730.03 (2x365.016) 760.95 (3x253.65)			
ARGON				404.442 415.859* 416.418 418.188 419.103 420.067* 425.936 427.217 430.010 433.356		696.543*	706.722 727.294 738.398 750.387* 751.465 763.511* 772.376 794.818	800.616 801.479 810.369 811.531* 826.452 840.821 842.465 852.144 866.794	912.297* 922.450 965.779 978.450	
NEON			336.99 341.790 344.770 346.658 347.257 352.047* 359.353		533.078 534.109 540.056 585.249** 588.190 594.483 597.553	603.000 607.434 609.616* 614.306* 616.359 621.728 626.650 630.479 633.443 638.299* 640.225* 650.653* 653.288 659.895 667.828* 671.704 692.947	702.405 703.241* 705.911 717.394 724.517* 747.244 748.887 753.577 754.404 783.906 794.318	808.246 811.855 813.641 825.938 826.608 830.033 836.575 837.761* 849.536 863.465 865.438 878.062 878.375 885.387		

# WAVELENGTH CALIBRATION SPECTRUM

Princeton Instruments  
USB Hg Source



Princeton Instruments  
USB Ne-Ar Source

