

PI-MTE: 1300B

1340 x 1300 imaging array | 20 x 20 μm pixels

The PI-MTE: 1300B from Princeton Instruments is an innovative, high-sensitivity imaging system designed to deliver scientific performance inside high-vacuum chambers over long operation times. The PI-MTE: 1300B incorporates a back-illuminated CCD without AR coating for ultra-low-energy X-ray detection. With 20 x 20 μm pixels and 100% fill factor, this system offers a large imaging area with very high spatial resolution and dynamic range. The thermoelectrically cooled design features PCBs, thermally linked to the circulating coolant to provide reliable operation inside vacuum chambers. The system's compact size and flexible tubing facilitate the positioning of the detector in limited space or on a movable arm.

FEATURES	BENEFITS
Exclusive back-illuminated CCD (without AR coating)*	Best response for soft x-ray
1340 x 1300 imaging array 20 x 20 μm pixels	Largest available area without AR coating for imaging
Unique thermal design	Efficient heat removal in high-vacuum environment
Flexible binning and readout	Increases frame rate and signal-to-noise ratio (SNR)
Compact design	For installation in limited space or on a movable arm in vacuum
Thermoelectric cooling	Minimizes dark current
Up to 2 MHz digitization	Delivers high frame rates without compromising system performance
Dual-digitizer option	Multiple-speed digitization allows complete freedom to select between "slow operation" for low noise and highest SNR or "fast operation" for rapid image acquisition
USB 2.0 interface configuration	Seamless, plug-and-play connection to PC notebooks and desktops Easy OEM integration
Optional: LightField® (for Windows 8/7, 64-bit) Or WinView/Spec (for Windows 8/7/XP, 32-bit)	Flexible software packages for data acquisition, display and analysis; LightField offers intuitive, cutting edge user interface, IntelliCal® and more.
PICAM (64-bit) / PVCAM (32-bit) software development kits (SDKs)	Compatible with Windows 8/7/XP, and Linux; Universal programming interfaces for easy custom programming.

*Contact your local sales specialist for other CCD options.

Applications:

Soft X-ray Imaging , X-ray Microscopy,
EUV Lithography, X-ray Plasma Imaging

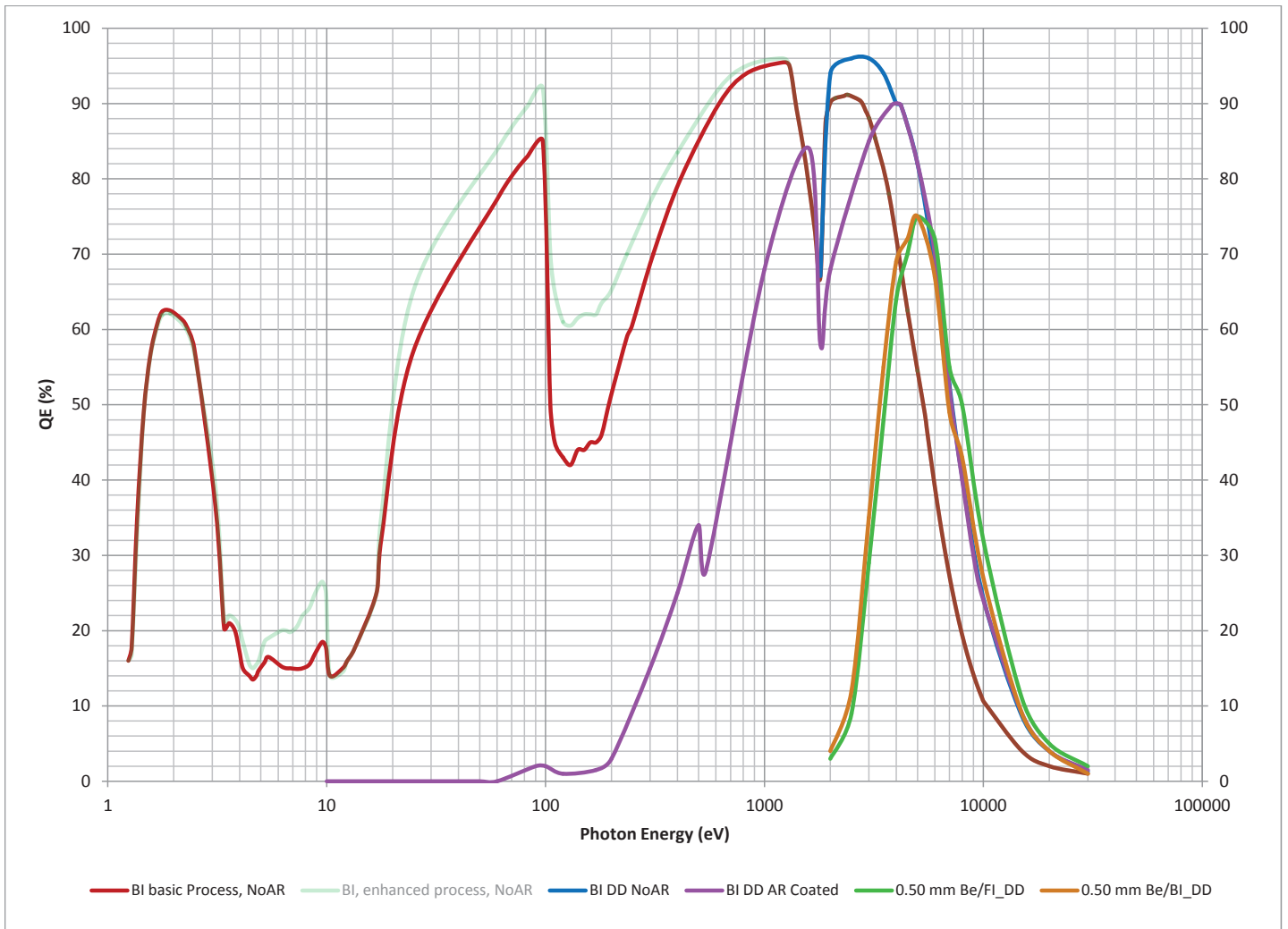
SPECIFICATIONS

CCD image sensor	PI Exclusive: Scientific-grade, back-illuminated, MPP device without AR coating		
CCD format	1340 x 1300 imaging pixels 20 x 20 μm pixels 100% fill factor 26.8 x 26.0 mm imaging area (optically centered)		
	MINIMUM	TYPICAL	MAXIMUM
Linear full well	130 ke-	200 ke-	
Output amplifier	130 ke-	250 ke-	
System read noise			
@ 50 kHz digitization		3 e- rms	4 e- rms
@ 100 kHz digitization		4 e- rms	6 e- rms
@ 200 kHz digitization		6 e- rms	8 e- rms
@ 500 kHz digitization		8 e- rms	13 e- rms
@ 1 MHz digitization		10 e- rms	15 e- rms
@ 2 MHz digitization		15 e-rms	25 e-rms
Dark current @ -50° C operation		0.05 e-/p/s	0.2 e-/p/s
Deepest cooling temperature TE (chilled liquid)	-45° C	-50° C	-55° C
Vacuum Compatibility		10 ⁻⁴ Torr	10 ⁻⁶ Torr*
Nonlinearity @ 100 kHz	2%		
Readout bits / speed	16 bits @ 50 kHz to 2 MHz		
Parallel shift rate	48 $\mu\text{sec}/\text{row}$		

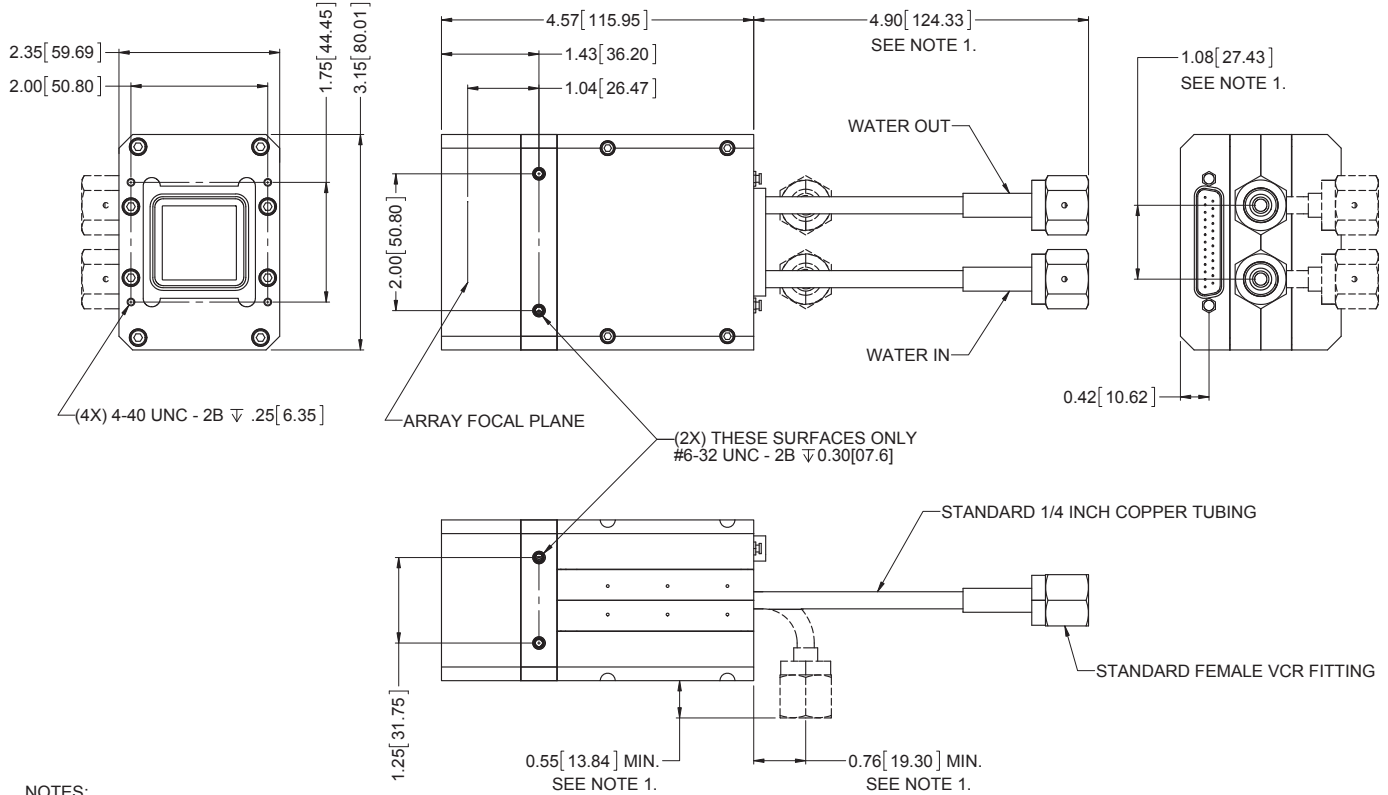
NOTE: All specifications subject to change

* Requires dynamic vacuum

Quantum Efficiency Curve



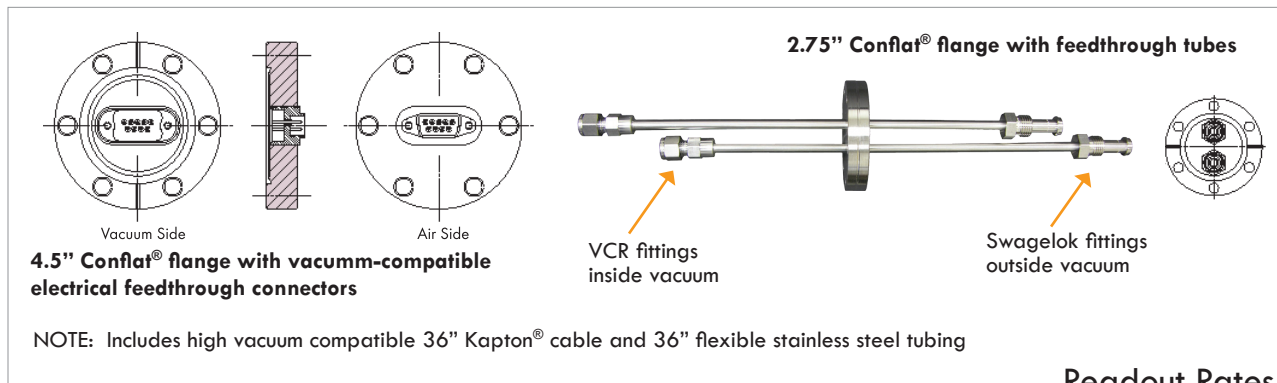
MTE Drawing



NOTES:

1. WATER TUBE LENGTH AND POSITION MAY BE CUSTOMIZED, SUBMIT DIMENSIONAL REQUIREMENTS AT TIME OF ORDER.

Vacuum Interface



Readout Rates

Binning	@ 2 MHz	@ 1 MHz	@ 100 kHz	@ 50 kHz
1 x 1	0.945 sec	1.818 sec	17.53 sec	33.384 sec
2 x 2	0.46 sec	0.636 sec	4.79 sec	8.755 sec
4 x 4	0.229 sec	0.273 sec	1.427 sec	2.42 sec