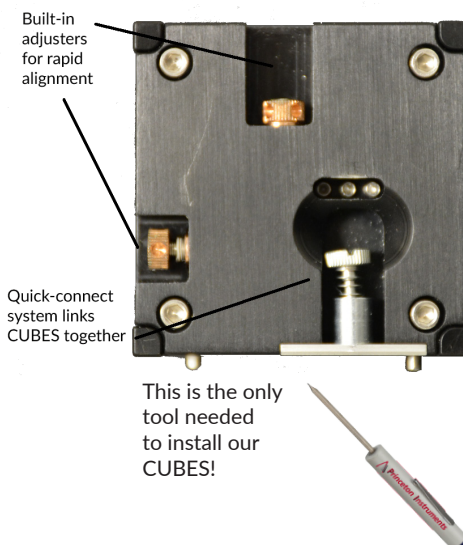
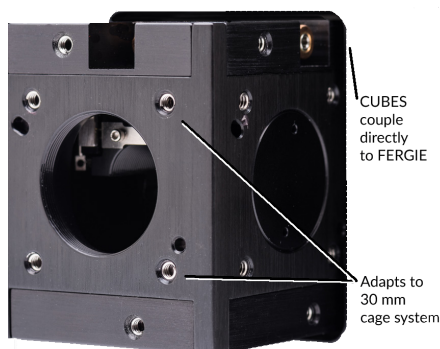


# There's a CUBE for that!

With FERGIE CUBES, interfacing is a cinch! If you've ever spent more time digging through cabinets than conducting your actual experiment, you'll definitely appreciate these CUBES.

- Designed for free space and fiber coupling
- Pre-aligned (stays aligned as more CUBES are added)
- Easy to attach using only a screwdriver
- Compatible with Thorlabs® 30 mm cage system

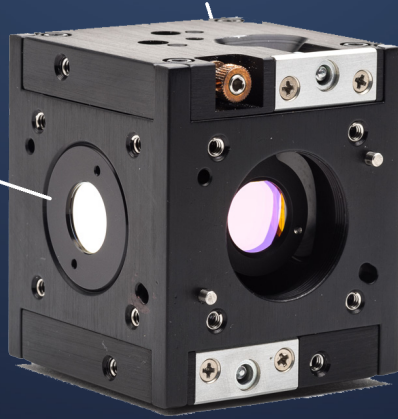


**We promise that now you'll spend more time doing spectroscopy than setting up for it.**

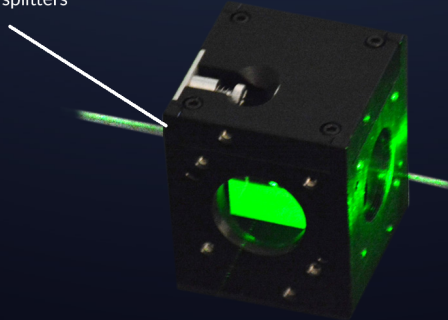
**-FERGIE™**

Lever Your Genius

Filter CUBES  
for Raman/  
fluorescence  
spectroscopy



Precision-aligned  
beam splitters



# FERGIE CUBES

The following is an initial list of CUBES available with FERGIE. Be sure to check out FergieSpec.com as more CUBES will be added in the future.

## CUBE 1:

### Focusing

Houses an f/4 achromatic doublet lens with precision focusing and translation adjustment to bring light into FERGIE on-axis every time.

## CUBE 2:

### 785 nm Raman Filter

Contains a pre-aligned Princeton Instruments dichroic beam splitter (127  $\text{cm}^{-1}$  edge) with a matching OD 6 edge filter and a built-in laser line filter. Raman is now turnkey!

## CUBE 3:

### Sample Chamber

A four-port, two-lens sample chamber designed to house a 12.5 mm quartz cuvette makes measuring liquid-phase samples a breeze. Ideal for Raman, absorbance, and fluorescence spectroscopy.



Enabling line of  
accessories

## CUBE 4:

### Beam Splitter

Contains a precision-aligned 50:50, 70:30, or 90:10 cubic beam splitter. Ideal for introducing a witness camera, additional laser line, or absorbance reference line to the optical path. No alignment is necessary. Just connect!

## CUBE 5:

### Filter

Contains an indexing linear slide capable of housing five 1/2 inch diameter filters. Ideal for inserting order-sorting or band-limiting filters into your optical design.

